



the **skills** network 

Carbon Reduction Plan



Supplier name: The Skills Network Ltd
Publication date: February 2022

Commitment to achieving Net Zero

The Skills Network is committed to achieving Net Zero emissions by 2050

Baseline Emissions Footprint

Baseline emissions are a record of the greenhouse gases that have been produced in the past and were produced prior to the introduction of any strategies to reduce emissions. Baseline emissions are the reference point against which emissions reduction can be measured.

Baseline Year: 2019/20

Additional Details relating to the Baseline Emissions calculations.

Baseline Greenhouse Gas (GHG) Emissions have been calculated for the year ending 31st July 2020 to align with The Skill's Network's financial year. Our emissions data is reported in line with the Greenhouse Gas Protocol Corporate Accounting and Reporting Standard. Our Baseline Emissions cover Scope 1 and Scope 2 emissions and the following Scope 3 emissions:

Business travel – transport related emissions from staff travel for work.

Postage – transport related emissions from post and courier use.

Employee commuting – transport related emissions from staff commuting to and from work.

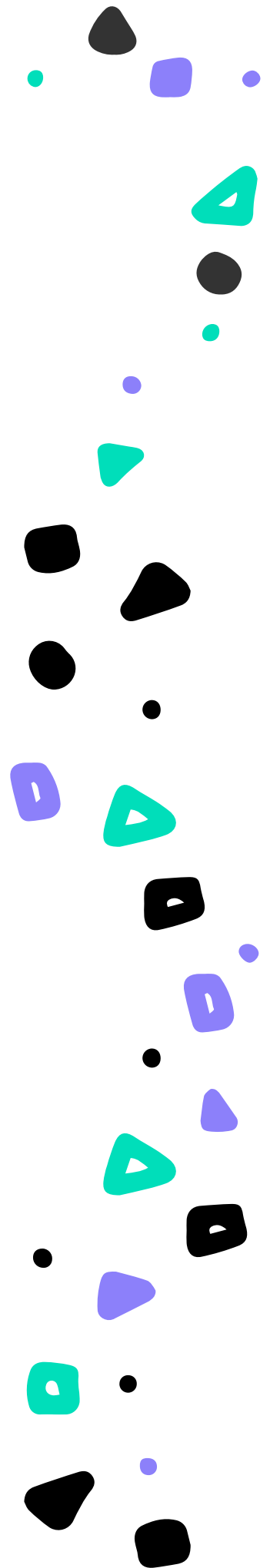
Printing – emissions from producing printed material (e.g. training packs).

Home working – emissions from energy use while working at home from additional heating and electricity consumption.

Our baseline year includes the start of the pandemic (March - July 2020). During this period our premises wasn't occupied. This resulted in significantly reduced emissions from electricity use. Emissions from business travel, employee commuting and home working were also impacted by covid during our Baseline Emissions year.

We have used the Carbon Trust's calculator, and the UK Government's Conversion Factors for Company Reporting to calculate our baseline emissions.

The Skills Network has no subsidiary companies and is registered in England company as number 06445363. Registered Office: Unit 16 Abbey Court, Benedict Drive, Selby, North Yorkshire, YO8 8RY.



Baseline year emissions: 2019/20

Emissions	Total (tCO ₂ e)
Scope 1	3.8
Scope 2	33.8
Scope 3 (Included Sources)	294 <i>(Business travel, postage, printing, commuting, and home working)</i>
Total Emissions	331.6

Current Emissions Reporting

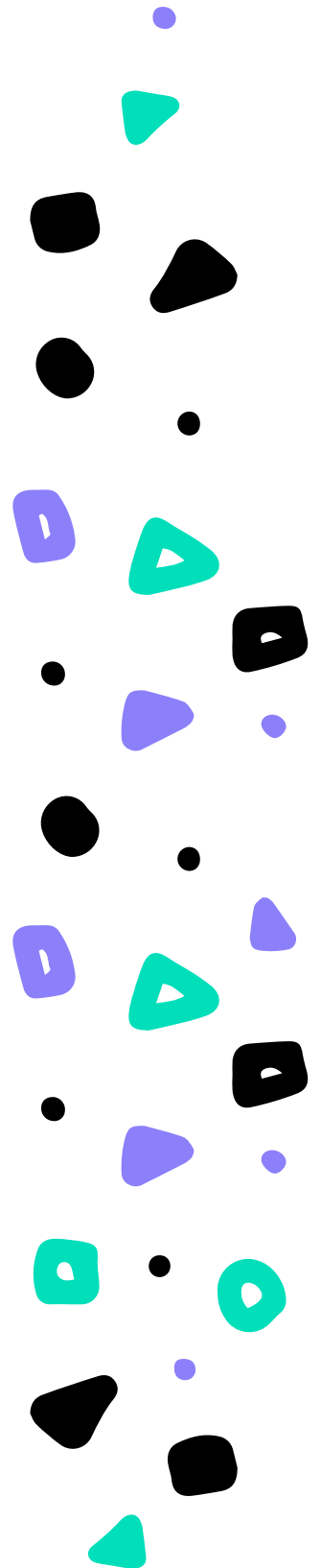
Reporting Year: 2020/21

Emissions	Total (tCO ₂ e)
Scope 1	4.1
Scope 2	16.0
Scope 3 (Included Sources)	106.1 <i>(Business travel, postage, printing, commuting, and home working)</i>
Total Emissions	126.3

Emissions reduction targets

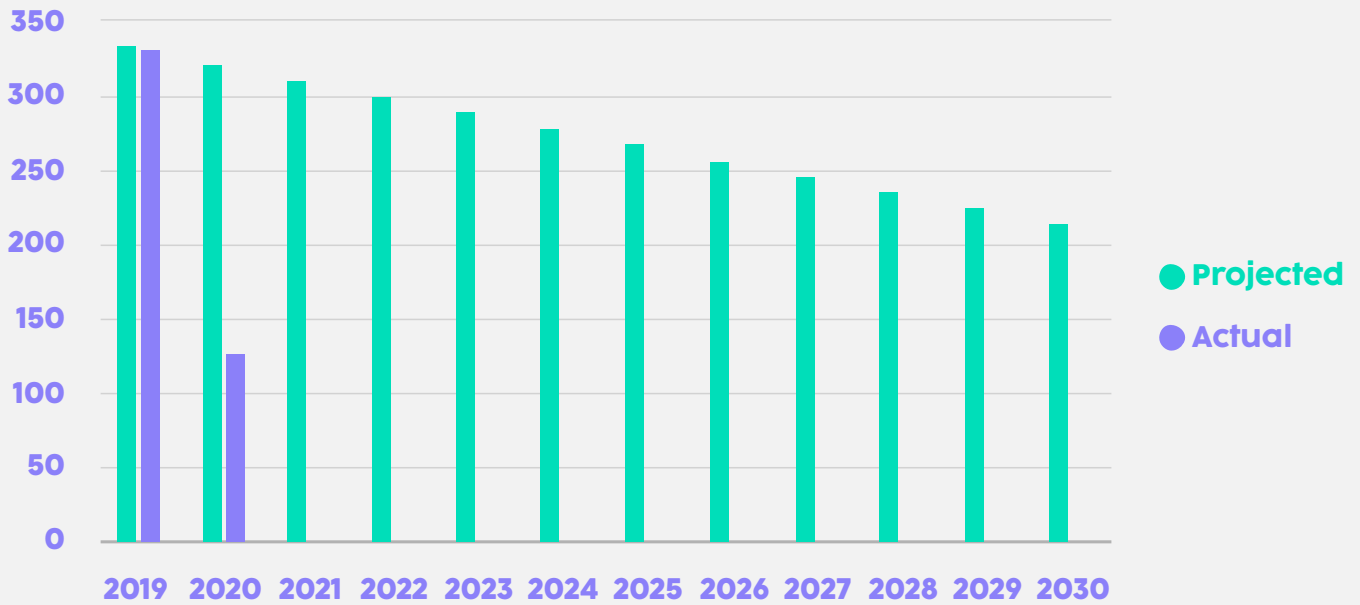
The Skills Network is committed to achieving net zero emissions by 2050

The Skills Network aims for a 19.5% reduction in its Scope 1, Scope 2 and Scope 3 emissions (from baseline) by 2025/26 compared to Baseline Emissions.

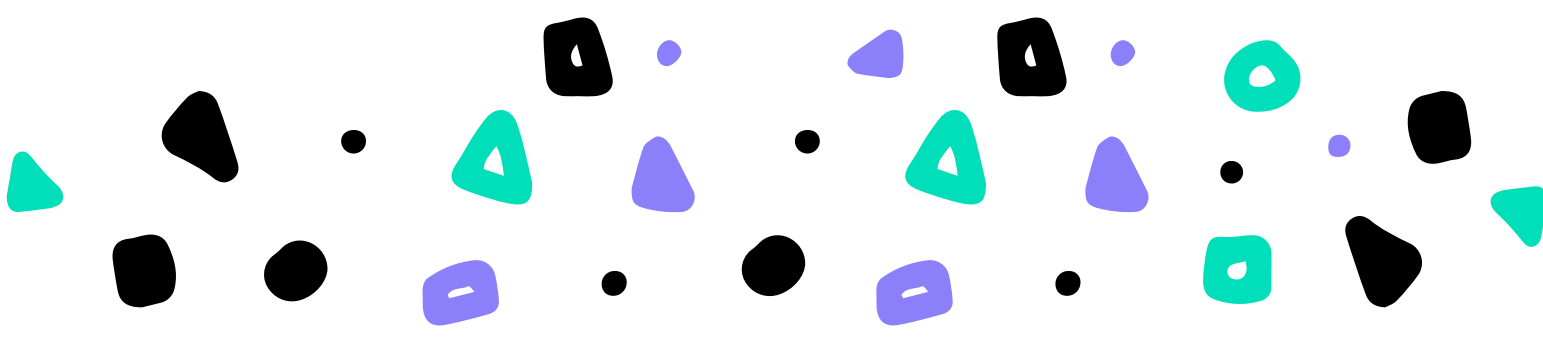


Progress against these targets can be seen in the graph below:

Actual & Project Carbon Footprint for the skills network 2019-30



It should be noted that Covid-19 significantly impacted our GHG emissions, specifically business travel and commuting and the Company foresees some bounce-back in these emissions post Covid-19.



Carbon Reduction Projects

The following environmental management measures and projects have been completed or implemented since the 2019/20 baseline:

- Implementation of Environment and Sustainability Policy.
- Increased home working and use of video conferencing. This has reduced transport related emissions from staff commuting between home and work and business travel to business meetings and training.
- Increased provision of online training reducing emissions from the production of paper for training packs and marketing materials, and emissions related to printing
- Reduced postage of printed materials to reduce transport related emissions.
- Implementation of energy efficiency measures in office to reduce electricity consumption from monitors and raise awareness amongst staff about energy use.
- Use of local suppliers to reduce the carbon footprint from procurement of goods and services.
- Improved recycling facilities in office and initiatives to reduce and reuse waste.
- Environmental inductions to improve environmental awareness, and information in office to encourage energy efficiency.

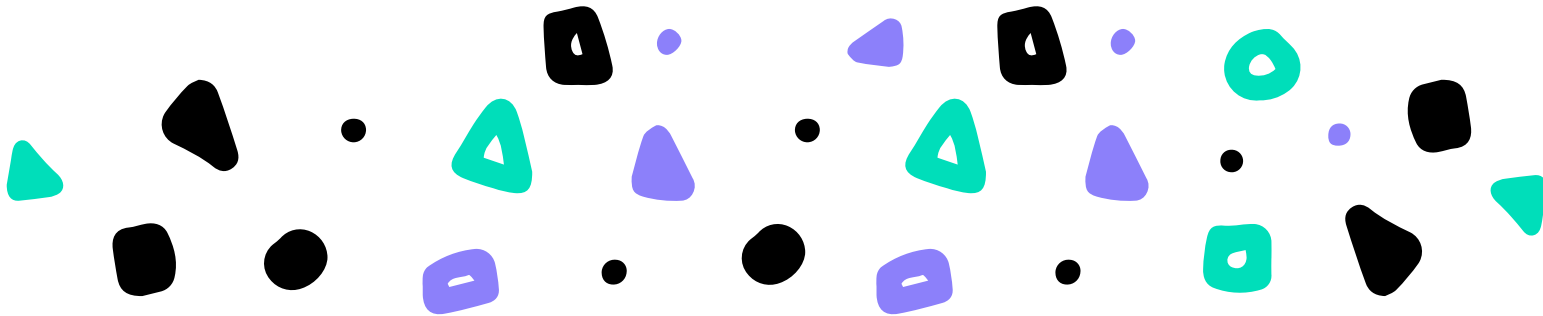
The carbon emission reduction achieved by these schemes equate to 205 tCO₂e, a 38%ge reduction against the 2019/20 baseline:

In order to continue our progress to achieving Net Zero, we have adopted the following carbon reduction targets.

- Implementation of hybrid home/ office working to reduce emissions from commuting.
- Development of a Travel Plan to encourage more sustainable modes of transport.
- Improvements to energy efficiency as part of new office refurbishment in 2022/23.

In the future we hope to implement further measures such as:

- Procurement of green electricity.
- Roll out of green skills training across our portfolio integrating sustainability into our training programmes.
- Procurement of electric vehicles for our fleet.



Declaration and Sign Off

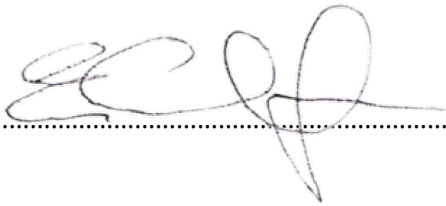
This Carbon Reduction Plan has been completed in accordance with PPN 06/21 and associated guidance and reporting standard for Carbon Reduction Plans.

Emissions have been reported and recorded in accordance with the published reporting standard for Carbon Reduction Plans and the GHG Reporting Protocol corporate standard and uses the appropriate Government emission conversion factors for greenhouse gas company reporting .

Scope 1 and Scope 2 emissions have been reported in accordance with SECR requirements, and the required subset of Scope 3 emissions have been reported in accordance with the published reporting standard for Carbon Reduction Plans and the Corporate Value Chain (Scope 3) Standard .

This Carbon Reduction Plan has been reviewed and signed off by the board of directors

Signed on behalf of the Supplier:



.....

Date: ..23/02/2022.....

